

812 LANSDOWNE AVE. | 518



Est. 2014

A SPACIOUS FOYER
WELCOMES YOU HOME
TO THIS WELL LAID OUT
CONDO.

THE FRONT HALL COAT
CLOSET & LAUNDRY
CLOSET ARE BOTH
TUCKED AWAY FROM
YOUR MAIN LIVING
SPACE.



THE OPEN CONCEPT
KITCHEN FEATURES
STAINLESS STEEL BUILT-IN
APPLIANCES, GRANITE
COUNTERTOPS, TILE
BACKSPLASH AND LOADS
OF CUPBOARD & STORAGE
SPACE!

THE PENINSULA SEATING IS
GREAT FOR BOTH YOUR
SOUS-CHEF OR FOR
ENTERTAINING!

DINE.



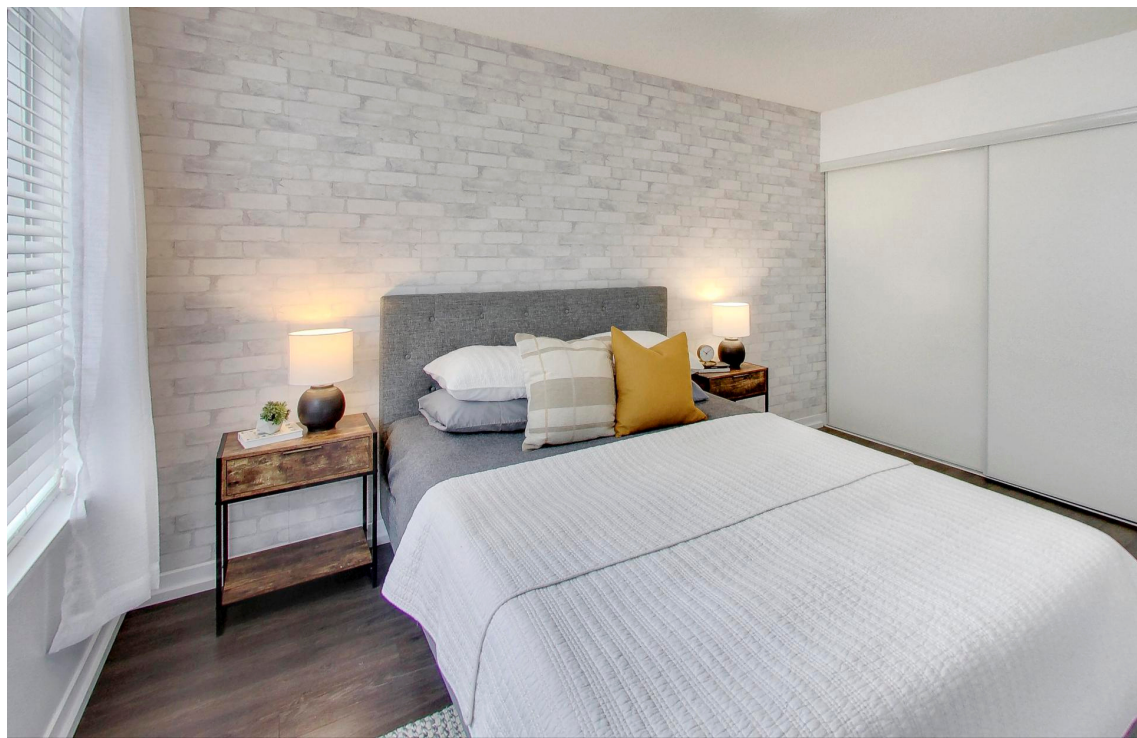
LIVE



THE OPEN CONCEPT LIVING
AND DINING ROOMS OPEN
UP ON TO A NORTH
FACING BALCONY.

THE AFTERNOON SUN IS
PERFECT FOR AN HERB
GARDEN!

A BRIGHT &
SPACIOUS BEDROOM
FEATURES A DOUBLE
CLOSET, LAMINATE
FLOORING AND AN
EXTRA LARGE
WINDOW.





THE GENEROUSLY SIZED DEN IS THE PERFECT FLEX SPACE AND COULD BE USED AS A GUEST ROOM, NURSERY OR HOME OFFICE.

WORK &



PLAY.



ENJOY ONSITE BUILDING AMENITIES INCLUDING; ENCLOSED BBQ AREA, DOG RELIEF AREA, GYM, THEATRE ROOM, RECREATION ROOM AND PARTY ROOM.

EASY AND AMPLE VISITOR PARKING & ONSITE MANAGEMENT & SECURITY.

EASY ACCESS TO THE PHARMACY AND GROCERY STORE ACROSS THE STREET MAKES LIVING HERE A BREEZE!

WHAT YOU NEED TO KNOW



AGE OF COMPLEX | 10 YEARS

PARKING | ONE UNDERGROUND

MAINTENANCE FEE | \$544.63/MO.

LOCKER | ONE

TAXES | \$2,078.78/YEAR (2023)

IDEAL CLOSING | 30-60 DAYS

SCHOOLS |

PUBLIC | Perth Ave Junior P.S. (Jk-6), Brock P.S. (7-8), Bloor C.I. (9-12)

INCLUSIONS |

refrigerator, stove, dishwasher, OTR microwave, stacked washer & dryer, all electric light fixtures, all blinds, mirror in bathroom, all closet shelving

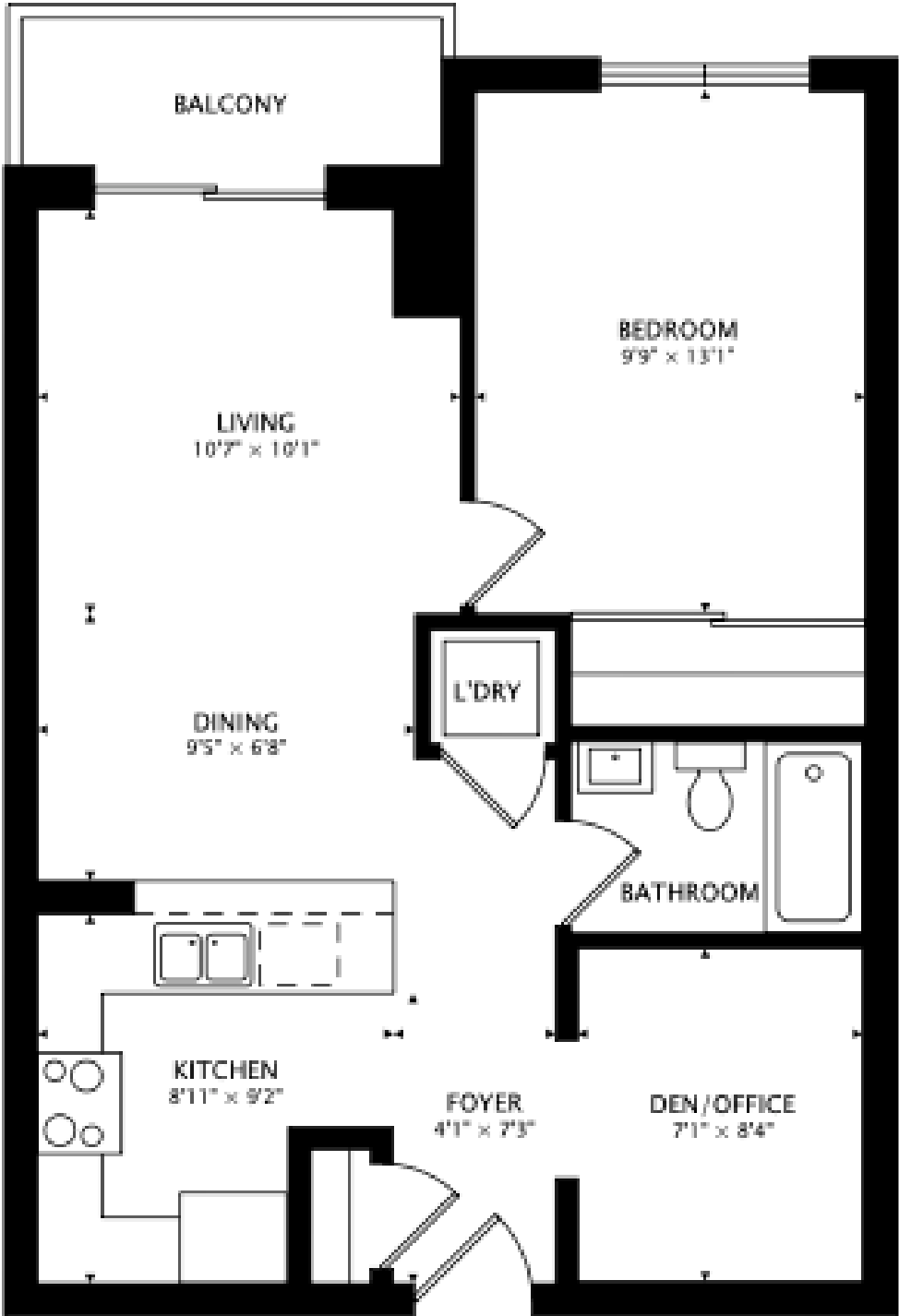
EXCLUSIONS |

bedroom curtains

MAINTENANCE FEE INCLUDES |

water, gas (heat & a/c), common elements, building insurance

FLOOR PLANS



TOTAL SQUARE FT: 645 + 39 BALCONY

For more information including a virtual tour of this beautiful property:

WWW.WESTSIDESTOREYS.COM



PROPERTY LISTED BY:

KIRSTEN CLAYTON, BROKER
& WENDY HAMMOND, BROKER

kirsten direct: 416.574.6109

wendy direct: 416.254.0202

info@westsidestoreys.com



Sutton Group Old Mill Realty Inc. Brokerage, Independently Owned + Operated (416) 234-2424